

O-PEN Interlock

PEN fault detection for three-phase infrastructures

The O-PEN Interlock from matt:e is a dedicated PEN fault detection unit with built-in O-PEN® technology that allows for the connection of large three-phase loads to the existing PME earthing facility.

The unit is designed to compliantly control 2 x field supplied contactors to isolate the load, disconnecting all live conductors and earth in the event of a fault, facilitating compliance with Regulation 722.411.4.1(iii)

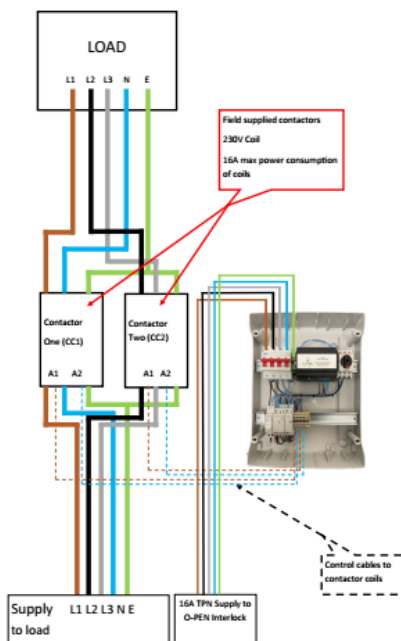
The field supplied contactors can be selected to protect any size load, for example, ideal for protecting a 250A distribution board supplying multiple EV charge points

The O-PEN Interlock does not require earth rods or measuring electrodes to function correctly.



Example installation layout

O-PEN® Interlock simple wiring example.



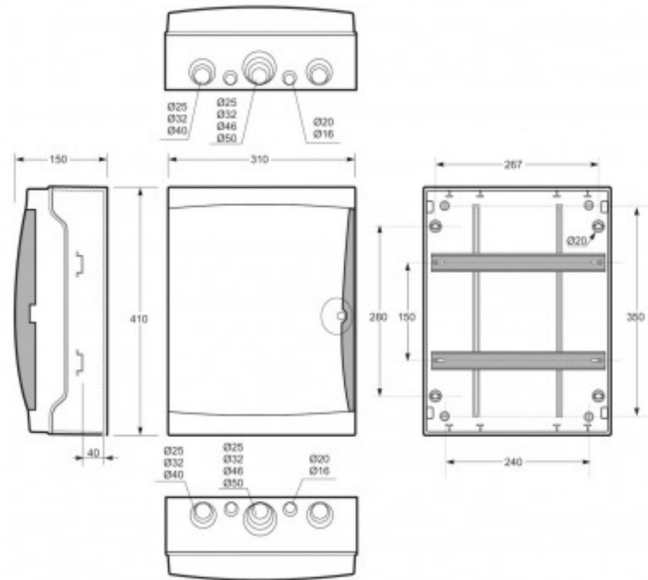
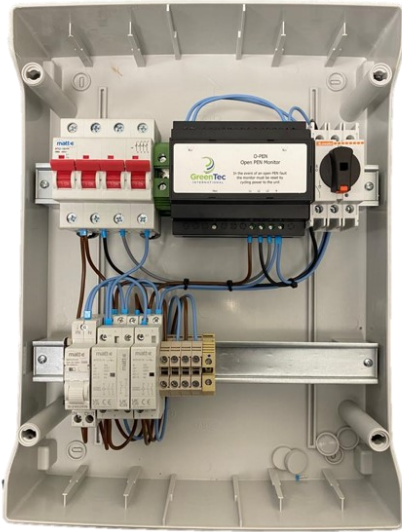
Product Features

- Built-in O-PEN® technology
- NO EARTH ELECTRODES REQUIRED
- Protects any size load through field supplied contactors
- Auto reset once the fault has cleared
- Simple wire in wire out connection
- IP65 Enclosure
- Standard 1 Year parts warranty
- Designed and Built in the UK

...Simplifying EV connection

O-PEN Interlock

Dimensions and Specifications



Description	PEN fault detection for three-phase infrastructures
Input Volts	Nominal input voltage three-phase 400V 50Hz
Max Load	16A
Cable Entry Facility	Top and bottom 1xØ50-Ø40-Ø32-Ø25 / 2xØ40-Ø32-Ø25 / 2xØ20-Ø16
Terminal Capacity	6mm ²
Dimensions (H x W x D)	409x307x150mm
Weight	Approximately 7kG
Enclosure	IP65 IK 08
Glow wire	650°C
Warranty	The matt:e O-PEN Interlock is guaranteed for a period of 1 year from the date of purchase. This warranty is limited to the replacement of faulty components only.

...Simplifying EV connection

O-PEN[®] Interlock simple wiring example.

